



An ISO 2001 : 2015  
Certified Company



**Manufacturers of Customized  
Metal Turned Components & Fittings**



## About Us

We at Parth Metal Industries are proud to introduce ourselves as one of the Leading Manufacturers of Precision Metal Turned Components since 20 years. Our products are not just metal components; they are the results of meticulous craftsmanship and engineering expertise. We are dedicated to ensuring quality, which is evident in every piece we produce. Our primary focus is on delivering quality and ensuring customer satisfaction, which sets us apart.

## Material For Machining

We are capable of machining a wide range of materials which is best suited as per customers' application and requirement. Few commonly used metals are mentioned here.



**Brass**



**Stainless Steel**



**Aluminium**



**Copper**

## Our Mission

To continuously strengthen and upgrade our manufacturing processes, quality systems and people competencies by training & education and providing a safe work place.

## Our Vision

Our vision is to provide high quality, value added Precision & fastening solutions and services that will keep our client ahead of competition and in forefront of technology.

## Industries We Serve

We provide services to a diverse range of sectors and have tailored our offerings to meet their specific needs. We have adapted our services to suit a range of different industries. The following list includes a few of the industries we service.



**Electrical Industries**



**Automobile Industries**



**Oil & Gas Industries**



**Fitting Parts Industries**



## CNC & Precision Machining Components



We are engaged in offering a wide range of Turned Components to our clients at a reasonable cost. Our turned components are made using quality raw material such as high and fine grade brass to assure quality and reliability. We manufacture all types of turned components depending upon client's requirement for application in any industry. The range of Turned Components find wide application in machine building, automobile, hydraulics and general engineering industry.

## Customized Components



Customized Components are widely used for general fabrication, milling, fastening, machining, and other procedures due to their high reliability and durability. They are available in a variety of dimensions and are completely abrasion-resistant. They are made from brass, copper, stainless steel, aluminium and other material composition. Our customized components are precisely designed and engineered by our skilled professionals, who employ cutting-edge techniques and high-quality raw materials. The range of these metal components are manufactured as per industry standards and norms.

## Auto Components



We are committed to manufacturing optimum quality and a wide range of Auto Parts as per customer's specifications. Our auto parts are commonly used for different automobile and automotive applications. The range of Auto Parts can also be used freely for different industrial application from automobiles to construction industries. Our experts make sure that our products suit perfectly to your complex project requirements. The Automobile Components are made of superior grade metal and other raw material in different sizes and range to meet the exact demand of our customers.

## Forging Components & Fittings



We are specialized in manufacturing forging components and fittings like brass and gunmetal die casting components for various industries including water valve and pipe fittings, plumbing and sanitary fittings, agricultural equipment, automotive parts, lpg and cng valve fittings, electrical and engineering assembly. We can Manufacture any type of Forging Forging Parts, Forging Fittings, Forged and Machined Parts, Brass and Gunmetal Die Casting Components for various industries including Water Valve and Pipe Fittings, Plumbing and Sanitary Fittings, Agricultural Equipment, Automotive Parts, LPG and CNG Valve Fittings, Electrical and Engineering Assembly.

## Casting Components



We manufacture different Metal Casting components, including Iron castings, forgings, high and low-pressure die castings, gravity castings, aluminium extrusions, metal stamping, tubes, tools, dies, moulds, and fixtures. Steel and Iron are the two most commonly used materials for casting due to their excellent mechanical properties suitable for various applications. We also offer casting from Brass, Gunmetal, Phosphor Bronze, High Tensile Brass, Aluminium Bronze, Manganese Bronze, Silicon Bronze, and Lead Bronze.

## Electrical Components



We are manufacturing all Kinds of Electrical Components and Electrical Fittings like Electrical Plug Pins, Sockets Pins, Terminal Block, Connectors, Contacts and more. Electrical Components are consumed in various applications like Toggle Switches, Modular Switches, Switchgears, Fuse Switches, Plug Pins & Sockets and many Electrical & Electronics Equipment or Parts. Electrical Components for various industries including Power Generation, Electronic Industry, Solar Energy, Automotive Industry, Medical Industry, Electrical and Engineering Assembly.



## Fasteners



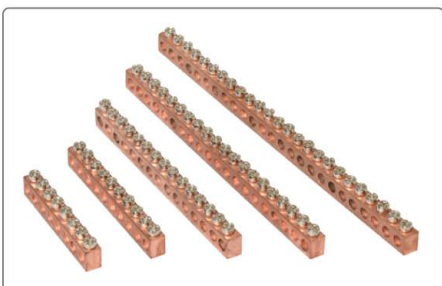
We provide High-Quality Fasteners with variety of types. Generally, Fasteners are hardware components that mechanically joins two or more elements together. Fasteners are easily removable without any damages to the joining components. They are made from brass, mild steel, stainless steel and other material composition. Fasteners are defined various types such as Screw, Washer, Anchor, Nuts, Rivets, Inserts, Bolts and many more.

## Inserts



The wide range of inserts include threaded moulding inserts, ultrasonic moulding inserts, knurled moulding inserts, moulding inserts for plastic, wood moulding inserts and more. The range of standard and high quality inserts designed to mould into the plastic, wood or any moulded components. The metal used in the manufacturing of these inserts is of optimum quality that ensures high durability, tensile strength and resistance to corrosion. High temperature bearing capacity has also made these inserts ideal for various industrial applications.

## Neutral Links



We offer a wide range of Neutral Link Bars, Neutral Earth Terminals in different sizes for electrical, electronics and telecommunication industrial requirements. You can get precision quality products with reasonable price and great service. We manufacture Neutral and Earth Terminals as per international standards and tolerances. Neutral and Earth Terminals are available in different types or size including 4 way, 8 way, 12 way, 26 way, 1 meter length and many more.

## Valves & GAS Parts



We Manufactures and Exports Gas Fitting Parts : Male - Female Elbow, Flare Female Elbow, Single Barb Elbow, Flare Male Elbow, Gas Fitting Connectors, Barb T - 3 Way, Compressor Female Elbow, Compressor Male Brand - T, Flare Equal Elbow, Gas Fittings Plug, Compressor Male elbow, Equal T, Compressor Union T, Force Barb - T, Brass Canteen Burner Valves, Main Line Shut off Valves, Brass Needle Control Valves, Brass F Valves, Straight Nozzle Valve, Brass Non Return Valve, LPG Cylinder Valve Fittings, Gas Valve, LPG Equipment.

## Battery Terminal



Our company has established itself as a leading manufacturer, exporter and supplier of superior quality Battery Terminals. These are mainly used for connecting batteries in auto industry and Inverter batteries. We take due care that terminal is not rough and don't have any sharp edges, to make sure the wires are not damaged while installing.

## Anchors



We provide a wide range of Anchors, which is utilize in multiple industrial applications for our valuable customers. We provide these in standard as well as customized dimensions, depending upon the customer's needs and requirements. It is temperature resistant, simple, and easy to apply. It has inside conical shape, which ensures equal expansion of segments while screwing. It is very useful in building material, concrete, brick, and natural stone and in wood.



## Quality Assurance

Superior quality is the primary concern at Parth Metal Industries. We strictly adhere to stringent quality management systems in order to facilitate an error free production from every stage. Our entire manufacturing process is monitored by a team of well professionals having years of experience behind them. A team of trained supervisors and quality control inspectors ensures that the quality is maintained at all the stages of production.

Our target is to provide zero defect products to our customer, which is remarkable and we firmly believe into it. Our plant is ISO 9001:2015 certified, a certification for quality management system which is being issued by the International Organization. To meet the global demand, we take care at every stage right from raw material purchase to finished goods. We always starve to provide our customers with best quality products with zero compromise and 100% satisfaction.

## Quality Equipments

Instruments are heartbeats of industry. Company has invested a good amount behind this to have majority type of inspection instruments including all instruments and gauges along with the profile projector and other sensitive instruments.



**Profile Projector**



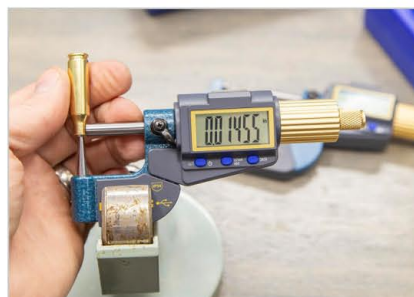
**Vernier / Caliper**



**Spectro Machine**



**Hardness Testing Machine**



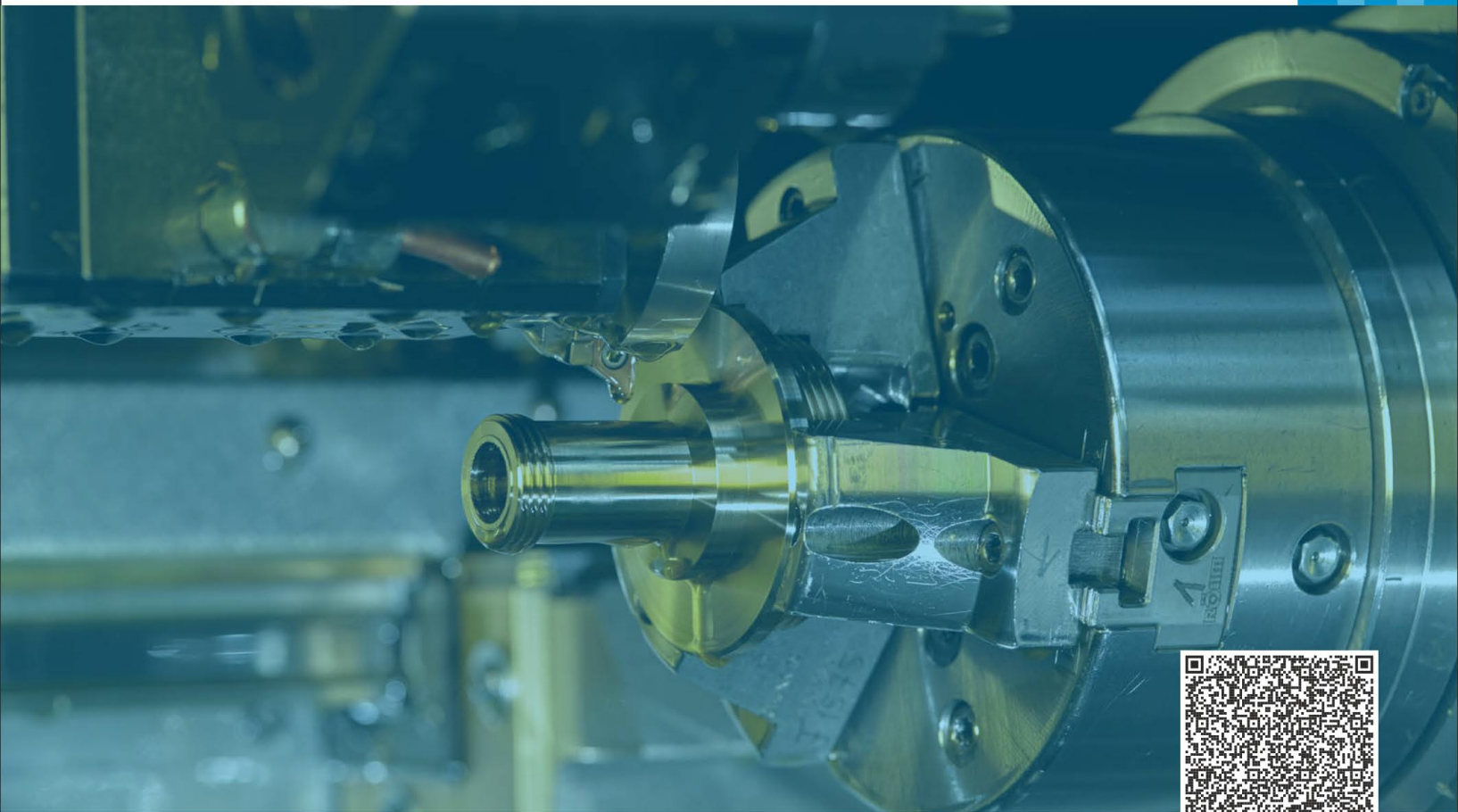
**Micro Meter**



**Gauges**

## Infrastructure

At PMI, we prioritize excellence through our state-of-the-art in-house manufacturing facility, equipped with cutting-edge machinery and operations leveraging innovative technologies. The industrial landscape boasts the latest and ultra-modern automatic equipment's that defines the pinnacle of technological advancement, managed by a team of highly experienced and skilled staff dedicated to producing materials of controlled quality. This machinery is not only a testament to our dedication to staying at the forefront of industry standards but also a reflection of our commitment to quality.



📍 Plot No. 408, G.I.D.C. Phase -2, Dared,  
Jamnagar, Gujarat - 361004. INDIA

☎ +91 89058 92429

☎ +91 99255 10993

✉ [info@parthmetalindustries.com](mailto:info@parthmetalindustries.com)

✉ [sales@parthmetalindustries.com](mailto:sales@parthmetalindustries.com)

🌐 [www.parthmetalindustries.com](http://www.parthmetalindustries.com)